



THE UNIVERSITY OF
WESTERN AUSTRALIA

Achieving International Excellence



The Road to Cosmo(PERTH)olitanism? Fugli(C)ity + Diver(C)ity + Eroti(C)ity

Associate Professor Paul J. Maginn
School of Earth & Environment
paul.maginn@uwa.edu.au



Photos: Paul J. Maginn



ACADEMIC

ADVISORY

EXPLICIT CONTENT

Contains Images of a Sexual
and Suburban Nature

Suburbia – The Fugly Reality!



THE UNIVERSITY OF
WESTERN AUSTRALIA
Achieving International Excellence

Australian Bureau of Statistics

3218.0 Regional Population Growth, Australia

Table 5. Estimated Resident Population, Local Government Areas, Western Australia

Local Government Area	2003 no.	2004 no.	2005 no.	2006 no.	2007r no.	2008p no.	2003- 2008p(a) %	Change 2007r-2008p		State Rank (2007-2008)	
								no.	%	Fastest growth(b) no.	Largest growth no.
Wanneroo (C)	94022	100620	107733	115897	125706	134258	7.4	8552	6.8	4	1
Swan (C)	89987	92192	94353	97446	101129	105432	3.2	4303	4.3	13	2
Rockingham (C)	77870	80505	83458	87756	92231	96068	4.3	3837	4.2	14	3
Stirling (C)	179195	181227	183065	185485	189495	193300	1.5	3805	2.0	41	4
Cockburn (C)	72140	74232	76219	78478	81474	84652	3.3	3178	3.9	15	5
Mandurah (C)	51905	54841	57062	59288	61624	64787	4.5	3163	5.1	6	6
Gosnells (C)	87753	90491	93176	95746	97797	100594	2.8	2797	2.9	24	7
Armadale (C)	52141	52249	52114	52732	53607	55432	1.2	1825	3.4	17	8
Canning (C)	79139	79920	80517	81353	83172	84974	1.4	1802	2.2	37	9
Joondalup (C)	157345	157840	157415	157871	158227	159986	0.3	1759	1.1	59	10
Perth (C)	8973	9928	11265	12456	13635	15113	11.0	1478	10.8	1	11
Busselton (S)	24314	24850	26156	26930	27893	29183	3.7	1290	4.6	10	12
Kwinana (T)	22445	22686	23198	24186	25128	26387	3.3	1259	5.0	7	13
Serpentine-Jarrahdale (S)	12237	12497	12991	13354	14201	15281	4.5	1080	7.6	3	14
South Perth (C)	39043	39643	40278	40853	41574	42595	1.8	1021	2.5	34	15
Geraldton-Greenough (C)	33261	33342	34189	35049	35879	36887	2.1	1008	2.8	26	16
Victoria Park (T)	28288	28563	28943	29404	30156	31148	1.9	992	3.3	19	17
Harvey (S)	18386	18909	19688	20620	21550	22529	4.1	979	4.5	12	18
Kalamunda (S)	49509	50111	51367	51850	52522	53363	1.5	841	1.6	51	19
Belmont (C)	30414	30872	31158	31822	32597	33416	1.9	819	2.5	30	20

To Suburbia and... Beyond!



THE UNIVERSITY OF
WESTERN AUSTRALIA
Achieving International Excellence

Australian Bureau of Statistics

3218.0 Regional Population Growth, Australia

Table 5. Estimated Resident Population, Local Government Areas, Western Australia

Local Government Area	2003 no.	2004 no.	2005 no.	2006 no.	2007r no.	2008p no.	2003- 2008p(a) %	Change		State Rank (2007-2008)	
								Change 2007r-2008p		Fastest growth(b) no.	Largest growth no.
Bunbury (C)	30438	30758	31228	31712	32037	32841	1.5	804	2.5	31	21
Murray (S)	11657	11969	12345	12629	13037	13825	3.5	788	6.0	5	22
Kalgoorlie/Boulder (C)	30126	30083	30038	30336	30942	31716	1.0	774	2.5	32	23
Bayswater (C)	57128	57241	57236	58678	59383	60089	1.0	706	1.2	57	24
Albany (C)	31979	32366	32978	33446	33962	34667	1.6	705	2.1	39	25
Melville (C)	97497	97422	97560	97834	98714	99351	0.4	637	0.6	68	26
Fremantle (C)	26166	26208	26272	26341	26895	27453	1.0	558	2.1	40	27
Dardanup (S)	9431	9685	10283	10927	11613	12167	5.2	554	4.8	9	28
Capel (S)	8020	8999	9794	10753	11415	11935	8.3	520	4.6	11	29
Port Hedland (T)	13126	13077	12754	12871	12980	13375	0.4	395	3.0	23	30
Cambridge (T)	24706	24638	24854	25215	25531	25924	1.0	393	1.5	53	31
Broome (S)	13695	13915	14090	14175	15033	15386	2.4	353	2.3	35	32
Wyndham-East Kimberley (S)	7344	7290	7257	7159	7310	7662	0.9	352	4.8	8	33
Subiaco (C)	16125	16791	17099	17376	17774	18115	2.4	341	1.9	42	34
Mundaring (S)	35886	36031	36412	36628	37051	37361	0.8	310	0.8	62	35
Northam (S)	10285	10198	10333	10365	10409	10704	0.8	295	2.8	25	36
Nedlands (C)	21717	21678	21630	21614	21752	22012	0.3	260	1.2	56	37
Esperance (S)	13607	13657	13806	13757	14195	14443	1.2	248	1.7	47	38
Derby-West Kimberley (S)	7492	7390	7293	7355	7558	7799	0.8	241	3.2	20	39
Vincent (T)	28078	28393	28954	29504	30218	30453	1.6	235	0.8	65	40

Fuglisville?



THE UNIVERSITY OF
WESTERN AUSTRALIA
Achieving International Excellence

Fugliness nudges the unlovely into a realm of comic virtue. Once it's owned up to, it's something to laugh about, even celebrate.

[...]

I'm mindful that there is an important difference between happy-go-lucky unfussiness and militant carelessness, between not having a care and truly not giving a shit. Because even within the fugly zone some attitudes are uncivil; they corrode the utility of what we make and build together, they poison the way we behave towards each other. There's a point at which ugliness is simply inexcusable, and the richer this town gets, the harder it is to see the funny side.

Tim Winton (2009) *In Praise of Fugliness*, The Weekend Australian Magazine



Photo: Paul J. Maginn

Defining Fugliness



THE UNIVERSITY OF
WESTERN AUSTRALIA
Achieving International Excellence

- **Macquarie Dictionary**

- *adjective* **1.** extremely ugly.
- *noun* **2.** an unattractive person/object.
 - A blending of F#@K and UGLY]

- **Applications of fugly**

- Policy and Ideology
 - (New) Left –v- ‘New Right’
- Social/People/Community
 - Attitudes and Behaviour
- Spaces/Places/Buildings
 - Physicality, Aesthetics, Design, Character,

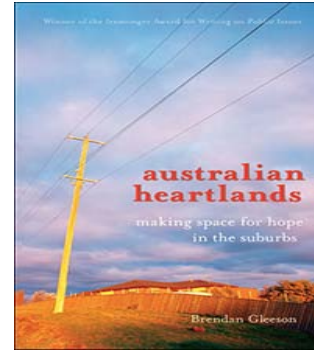
Fugli-burbs: Home of the Mundane & Cubbies?



THE UNIVERSITY OF
WESTERN AUSTRALIA
Achieving International Excellence

- **Suburban landscapes**

- social homogeneity
- residential uniformity and blandness
- (In)sufficient infrastructure/services



Abstract Fugli-art: Colour- 007

- **Cultural/intellectual/bourgeois snobbery**

- New World provincialism
- Non-urban = ‘artificial’/‘plastic’
- ‘Mindless conformism’

- ‘FALSE CONSCIOUSNESS’

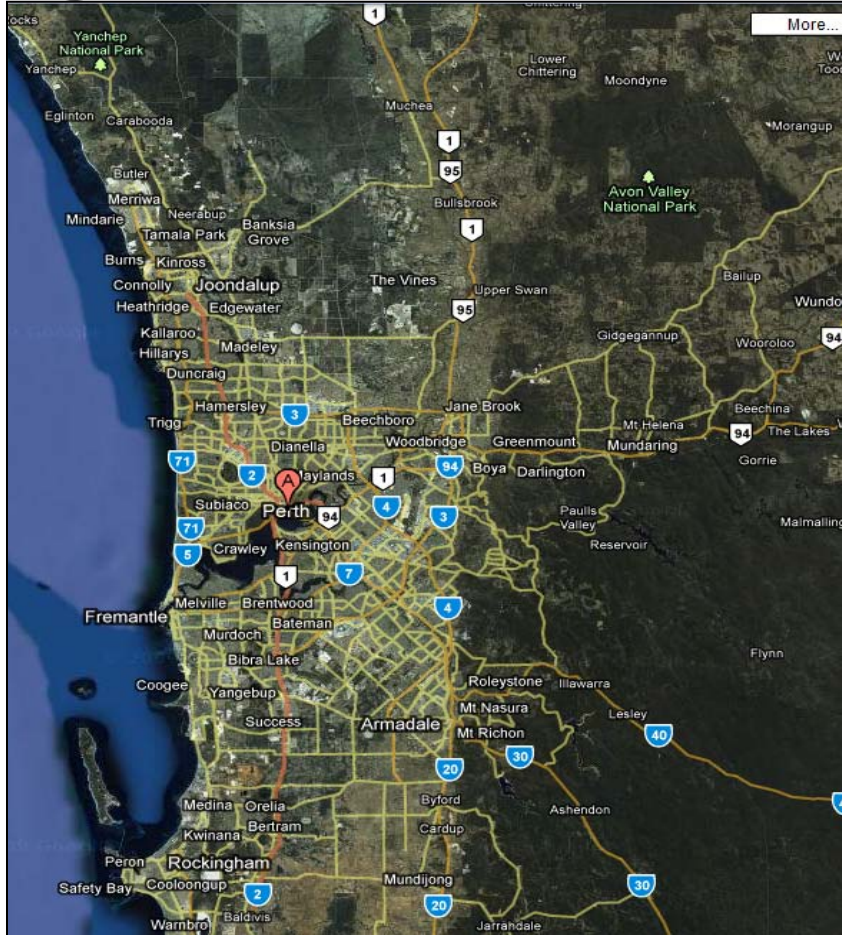


Photo: Paul J. Maginn

Fugli-Burbs (?)



THE UNIVERSITY OF
WESTERN AUSTRALIA
Achieving International Excellence



Burns Beach



Somerley



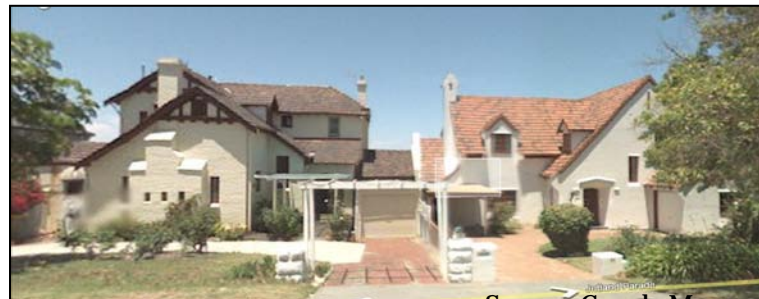
Wellard

Source: Google Maps

Unfugli-Burbs (?)



THE UNIVERSITY OF WESTERN AUSTRALIA
Achieving International Excellence



Source: Google Maps

McFugliness



THE UNIVERSITY OF
WESTERN AUSTRALIA
Achieving International Excellence



<http://www.geekologie.com/2008/03/12/framed-hometheater.jpg>



www.soundcraft.com.au



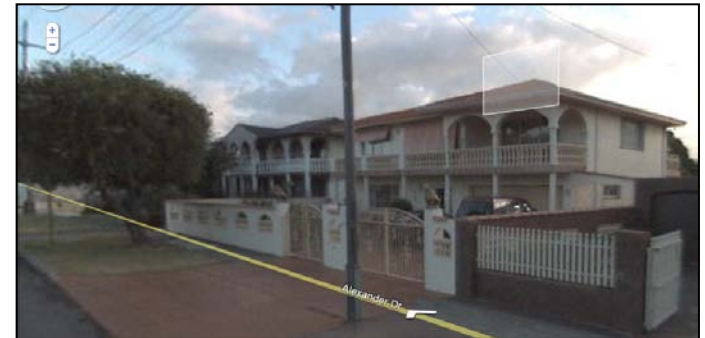
'Ethnic' McFugliness (?)



THE UNIVERSITY OF
WESTERN AUSTRALIA
Achieving International Excellence



Alexander Drive

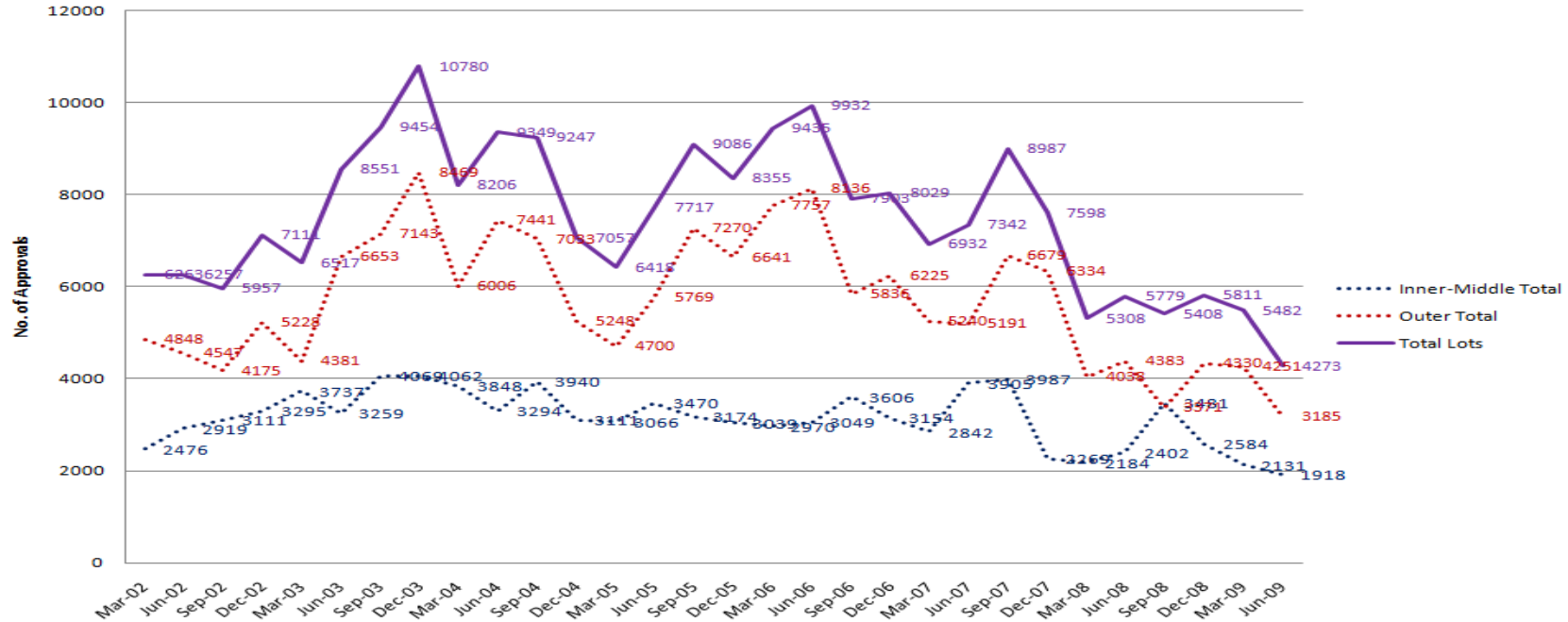


Source: Google Maps

Policy Challenges: To (Sub)Divide and Conquer!



**Total Sub-Division Approvals (Final and Conditional):
Inner/Middle and Outer Sub-Regions March 2002-June 2009**



328,00 @ 47% = 154,160

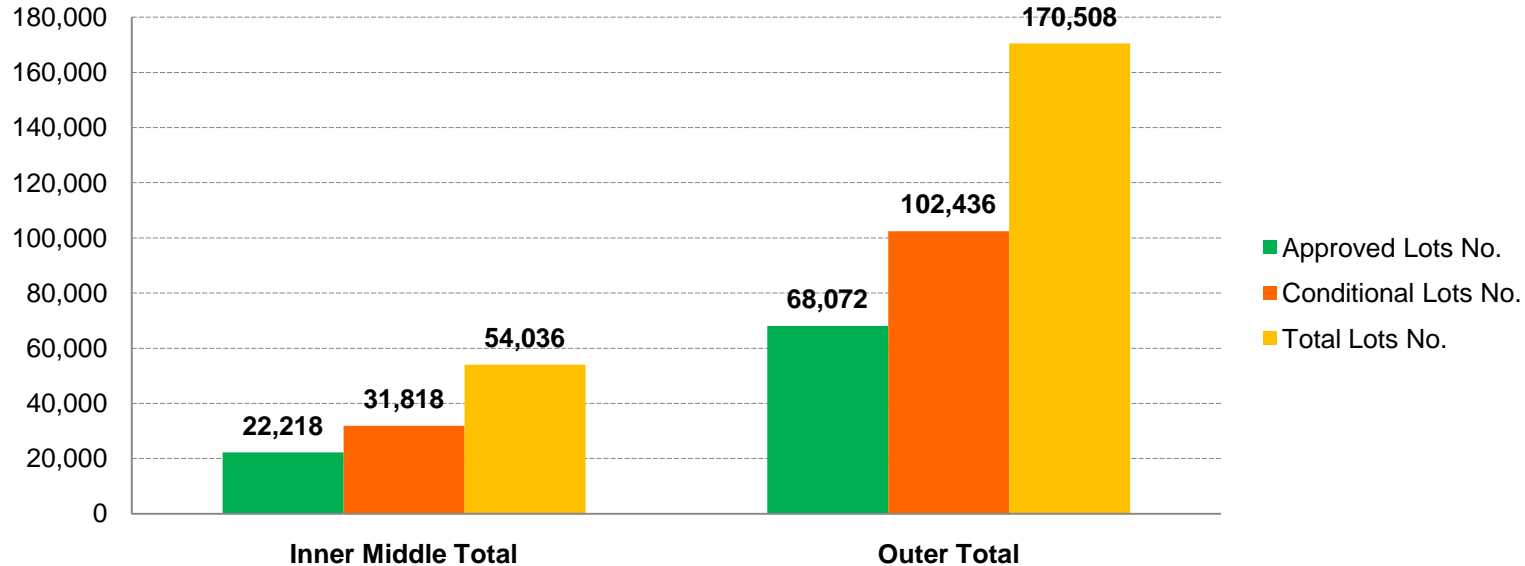
154,160 @ 2031 = 7,007 dpa

Policy Challenges: To (Sub)Divide and Conquer!



THE UNIVERSITY OF
WESTERN AUSTRALIA
Achieving International Excellence

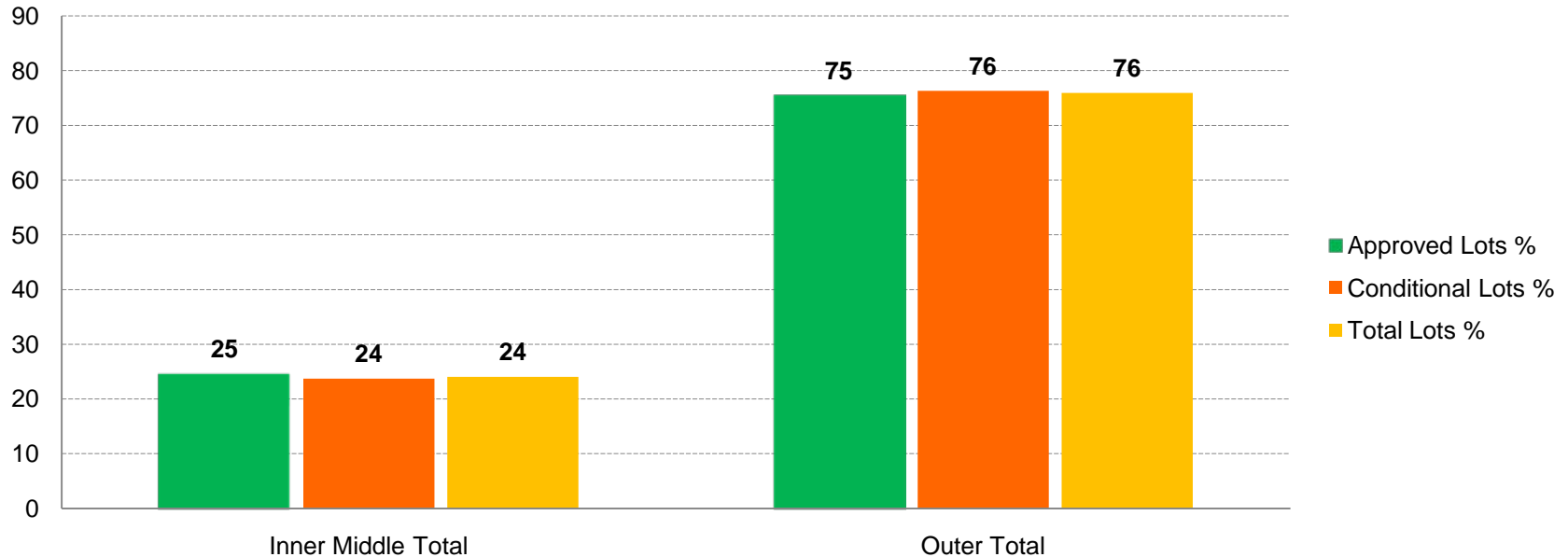
Total Subdivision Approvals by Inner/Middle and Outer Sub-Regional Planning Areas (March 2002 - June 2009)



Source: Department of Planning, SSS Database



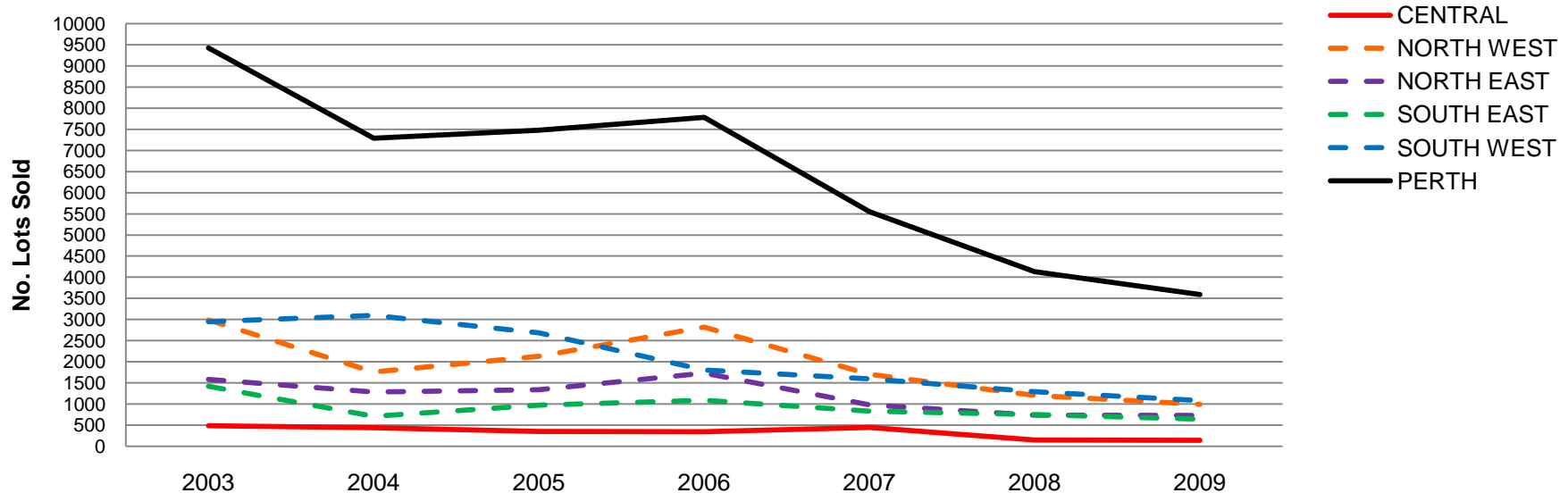
Percent of Total Subdivision Approvals by Inner/Middle and Outer D2031 Planning Sub-Regions (March 2022 - June 2009)





Policy Challenges: That's Your Lot!

UDIA Urban Development Index by D2031 Planning Region (2003 - 2009)



328,00 @ 47% = 154,160

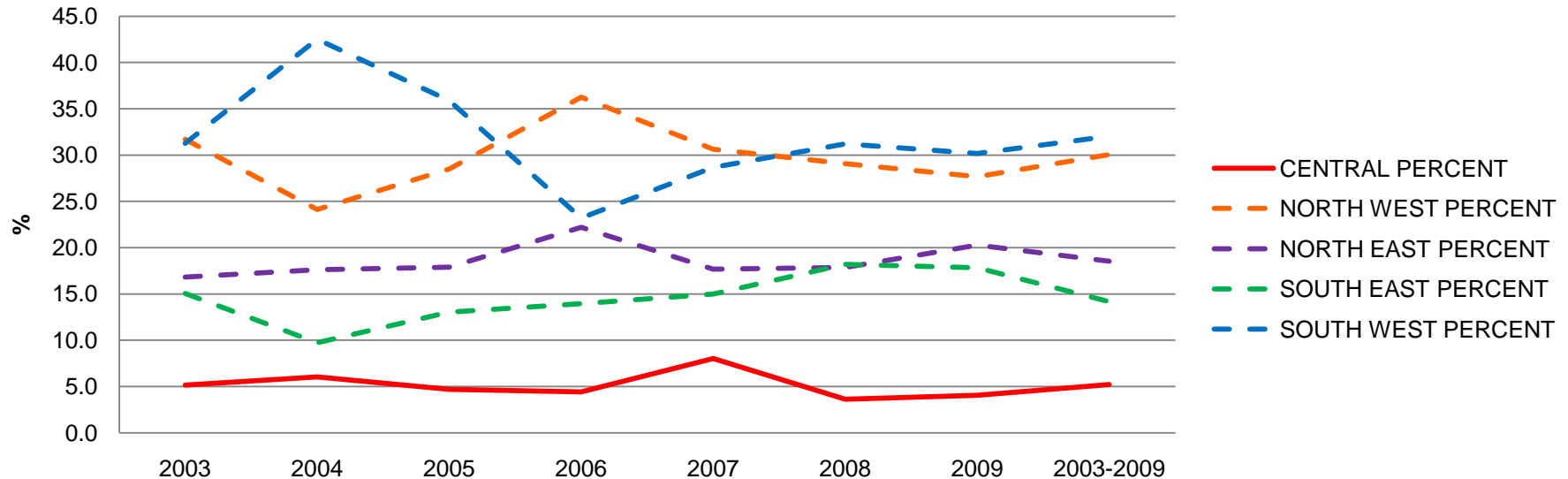
154,160 @ 2031 = 7,007 dpa

Source:
UDIA (WA) Urban Development Index



Policy Challenges: That's Your Lot!

**UDIA Development Index by D2031 Planning Region:
Percent of Lots Sold
(2003 - 2009)**



Somerley/Clarkson: Ethno-burb(?)



THE UNIVERSITY OF
WESTERN AUSTRALIA
Achieving International Excellence



Photos: Paul J. Maginn

Diver(c)ity as Cosmopolitanism



THE UNIVERSITY OF
WESTERN AUSTRALIA
Achieving International Excellence

	1996 Census					2006 Census					% Change 1996-2006	
	Perth SD		Australia			Perth SD		Australia			Perth SD	Australia
	Persons	%	Persons	%	% Difference	Persons	%	Persons	%	% Difference		
Australia	800,754	64.49	13,227,776	74.51	-10.02	889,328	61.54	14,072,944	70.88	-9.34	11.1	6.4
UK & Ireland	178,131	14.35	1,124,031	6.33	8.01	178,833	12.38	1,088,417	5.48	6.89	0.4	-3.2
Nth America	7,171	0.58	74,660	0.42	0.16	8,950	0.62	93,331	0.47	0.15	24.8	25.0
New Zealand	28,226	2.27	291,388	1.64	0.63	34,658	2.40	389,466	1.96	0.44	22.8	33.7
South Africa	9,655	0.78	55,755	0.31	0.46	18,829	1.30	104,131	0.52	0.78	95.0	86.8
Asia	72,613	5.85	831,413	4.68	1.16	90,815	6.28	1,137,679	5.73	0.55	25.1	36.8
Europe	61,533	4.96	838,754	4.72	0.23	55,903	3.87	740,158	3.73	0.14	-9.1	-11.8
Middle East	3,387	0.27	147,256	0.83	-0.56	4,575	0.32	171,357	0.86	-0.55	35.1	16.4
Born elsewhere(f)	44,111	3.55	544,956	3.07	0.48	60,325	4.17	691,495	3.48	0.69	36.8	26.9
Country of birth not stated	36,069	2.90	616,840	3.47	-0.57	102,861	7.12	1,366,309	6.88	0.24	185.2	121.5
TOTAL	1,241,650	100	17,752,829	100	0.00	1,445,077	100	19,855,287	100	0.00	16.4	11.8

Source: ABS

Diver(c)ity as Cosmopolitanism



THE UNIVERSITY OF
WESTERN AUSTRALIA
Achieving International Excellence

	1996 DATA						2006 Data					
	Australia		Western Australia		Perth SD		Australia		Western Australia		Perth SD	
Buddhism	199,812	1.1	18,509	1.1	17,366	1.4	418,756	2.4	34,349	2.0	31,422	2.5
Christianity:	12,582,764	70.9	1,119,424	65.6	822,408	66.2	12,685,836	71.5	1,162,529	68.1	864,562	69.6
Hinduism	67,279	0.4	3,640	0.2	3,407	0.3	148,119	0.8	8,156	0.5	7,614	0.6
Islam	200,885	1.1	12,571	0.7	10,986	0.9	340,392	1.9	24,185	1.4	22,137	1.8
Judaism	79,805	0.4	4,671	0.3	4,484	0.4	88,831	0.5	5,296	0.3	5,084	0.4
Other Religions:	66,690	0.4	8,609	0.5	5,595	0.5	109,022	0.6	11,181	0.7	8,626	0.7
No religion(f)	2,948,888	16.6	366,837	21.5	261,836	21.1	3,706,555	20.9	448,434	26.3	320,516	25.8
Other religious affiliation(g)	56,121	0.3	6,497	0.4	4,626	0.4	133,820	0.8	14,748	0.9	11,290	0.9
Religious affiliation not stated	1,550,585	8.7	165,190	9.7	110,943	8.9	2,223,957	12.5	250,208	14.7	173,823	14.0
Total	17,752,829	100.0	1,705,948	100.0	1,241,651	100.0	19,855,288	111.8	1,959,086	114.8	1,445,074	116.4

Source: ABS

Diver(c)ity as Cosmopolitanism



THE UNIVERSITY OF
WESTERN AUSTRALIA
Achieving International Excellence

	% Change 1996-2006		
	Australia	WA	Perth SD
Buddhism	109.58	85.58	80.94
Christianity:	0.82	3.85	5.13
Hinduism	120.16	124.07	123.48
Islam	69.45	92.39	101.50
Judaism	11.31	13.38	13.38
Other Religions:	63.48	29.88	54.17
No religion(f)	25.69	22.24	22.41
Other religious affiliation(g)	138.45	127.00	144.06
Religious affiliation not stated	43.43	51.47	56.68
Total	11.84	14.84	16.38

The Eroti(C)ity as Cosmopolitanism



THE UNIVERSITY OF
WESTERN AUSTRALIA
Achieving International Excellence



http://www.globalgraphica.com/main/archives/september_2005_calvin.jpg



http://razorapple.com/wp-content/uploads/2007/11/houston_billboard_calvin_klein.jpg



<http://www.zimbio.com/pictures/4aUYmWQ853O/Calvin+Klein+Billboard+Manhattan+SoHo+Neighborhood/qX9XsvqZYJa>

Eroti(c)ity as Cosmopolitanism



THE UNIVERSITY OF
WESTERN AUSTRALIA
Achieving International Excellence



Photo: Paul J. Maginn

The Eroti(c)ity as Cosmopolitanism



THE UNIVERSITY OF
WESTERN AUSTRALIA
Achieving International Excellence



Geography of the Eroti(C)ity

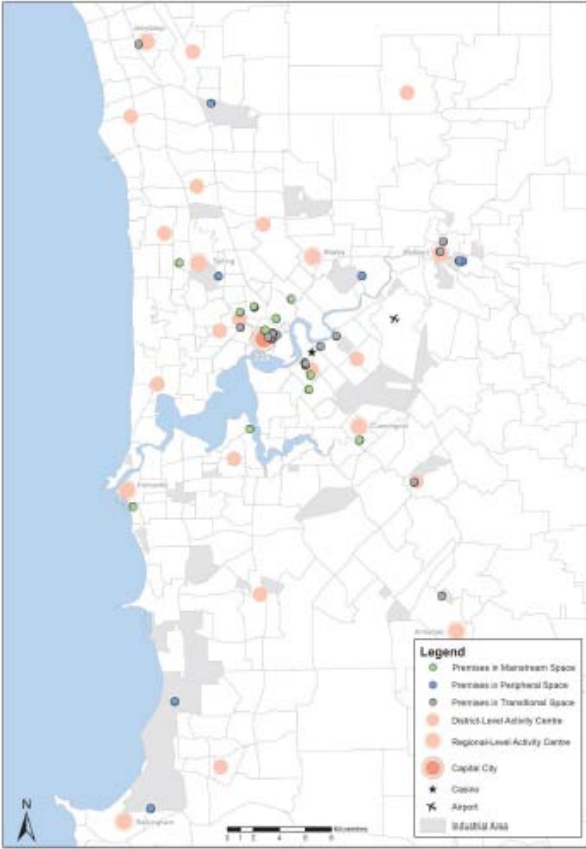
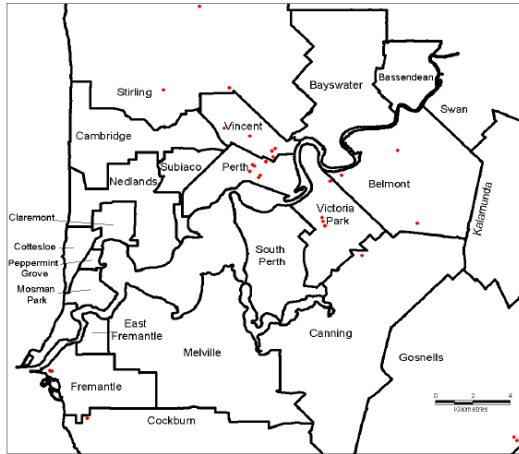
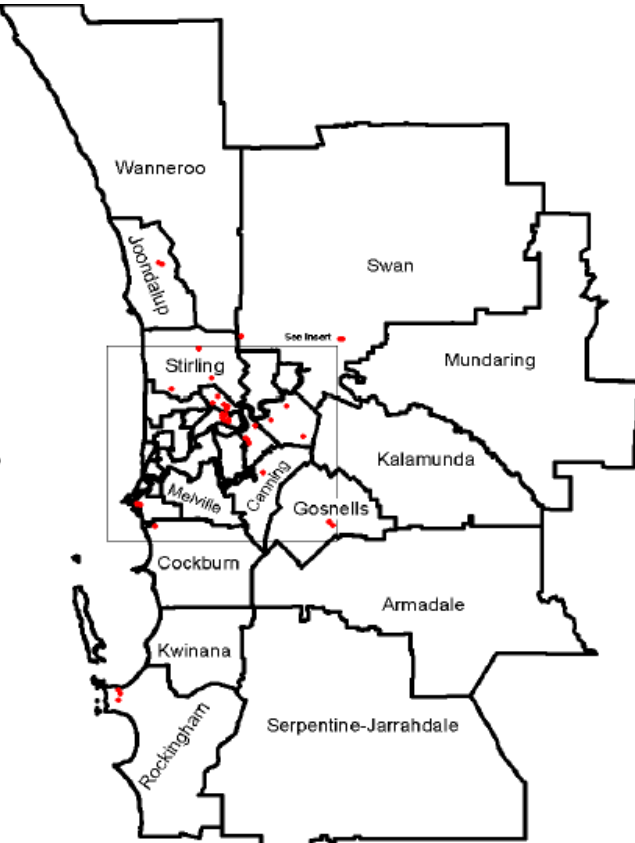


Figure 1: The spatial distribution of sex industry premises in Perth, and the spatial identity of their places



Conclusions:

CosmoPERTHolitan – Are We There Yet?

- Pockets of Cosmopolitanism
 - E.g. Northbridge; Mount Lawley; Maylands; Leederville
- Density = homogeneity of housing class (?) Silver bullet to suburban sprawl (?)
- What's wrong with suburbia?
 - “One person's fugliness is another's beauty”
- Increasing socio-cultural diversity
 - Implications for public policy – education; housing; planning; community relations
- Sexually adventurous city; Moralistic polity (?)
- The future dictates that we need to better critically understand the cultural preferences/needs/wants /tensions of an increasingly diverse community