

Big Projects: Big Visions

Menno Henneveld

Managing Director

Main Roads WA



Big Projects: Big Visions

Menno Henneveld
Managing Director
May 2012



Contents

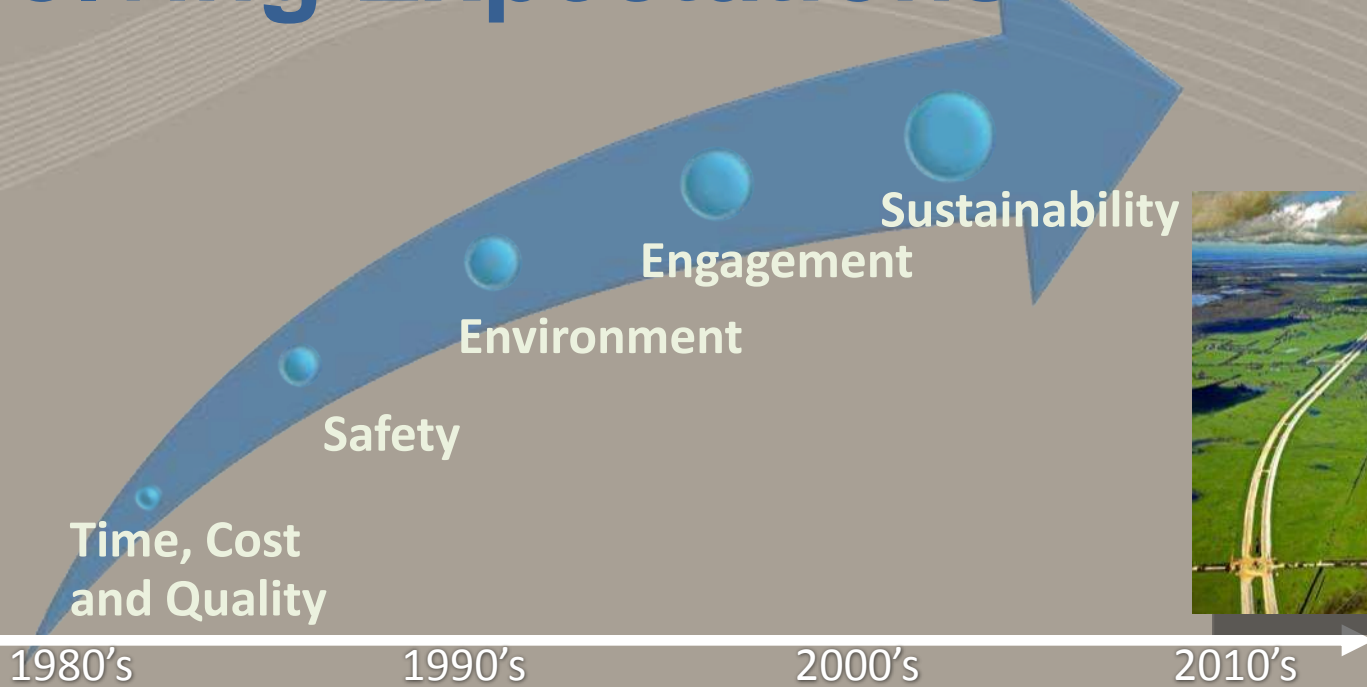
- Evolving expectations
- Recognising Opportunities and Delivering Solutions
- Case Studies
- Lessons Learnt





Evolving Expectations

Expected Value





Evolving Responses

Expected Value





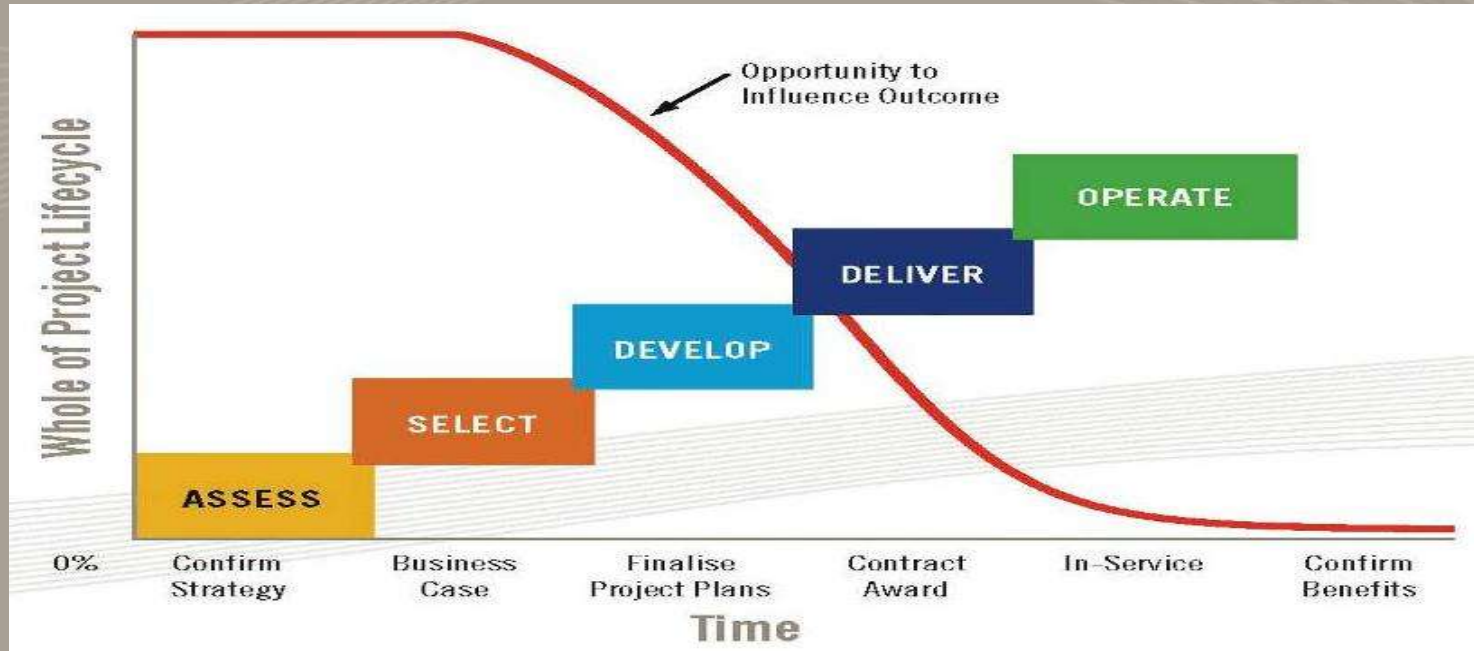
RO&DS

- Project Assurance Methodology
- Whole of project lifecycle approach
- Five phases and decision hold points
- Greater alignment and consistency

A single and consistent project life-cycle reporting and tracking process



Impact Points





Five Phases of RO&DS

ASSESS
Opportunities **1**

SELECT
Option **2**

DEVELOP
Project Plans **3**

DELIVER
Solution **4**

OPERATE
Maintain & Evaluate **5**

Key Activities	Key Deliverables
Define Potential Projects, Values, Risks and Costs	Preliminary Business Case
Identify preferred alternative and plan the way forward choosing sustainable outcomes	Business Case
Develop the Project Management Plan, Preliminary Designs	Updated Business Case, Project Management Plan
Implementation of Project Management Plan, Deliver Project, Handover Documentation	Tender, reconfirm Bus Case, Asset - Handover Documentation
Measure benefits/performance, Share Lessons Learnt	Bus Case benefit & cost re-evaluation, Mtce. Improvement



Five Phases of RO&DS

	Engagement Activities	Key Outputs
ASSESS Opportunities 1	Determine level of community and stakeholder engagement	Preliminary Engagement Plan including identifying all participants
SELECT Option 2	Engage with community and stakeholders	Engagement Plan with evidence of community input
DEVELOP Project Plans 3	Determine stakeholder and community requirements	Update Plan with agreed requirements including interest and influences
DELIVER Solution 4	Engage with community and stakeholders	Evidence of community input and ongoing engagement in delivery
OPERATE Maintain & Evaluate 5	Evaluation and review of engagement initiatives	Evaluation and review focussing on improvements and Lessons Learnt



Roe Highway Extension

Choose How You Get Involved



Here's where you can find information:

- Visit the South Metro Connect website at www.southmetroconnect.com.au
- Information sheets, newsletters, flyers
- Newspaper articles and advertisements

Here are ways you can actively participate:

- Community information days
- Online discussion forums at www.southmetroconnect.com.au
- Workshops
- Face-to-face meetings
- Email enquiries to enquiries@southmetroconnect.com.au
- Phone enquiries to 1800 132 572





Gateway WA





Lessons Learnt

- Understand the intensity and effort
- Engagement for Planning is different
- You have to mean it!
- Treat different stakeholders differently
- Constantly test your assumptions
- Team relationship management is important



**People are more likely to support
a change that affects them if they
are involved before the change is
made** Hugh Mackay